

Historic, Archive Document

Do not assume content reflects current scientific knowledge, policies, or practices.

U.S. DEPT. OF AGRICULTURE
NATIONAL AGRICULTURAL LIBRARY
FEB - 3 1995
CATALOGING PREP

**Alternative B
(Proposed Action)**
**Interagency Scientific
Committee (ISC)
Conservation Strategy**

**Northern Spotted Owl
Final Environmental
Impact Statement**

State of Oregon

Approximate Scale 1:700,000
1992

This alternative would apply the Conservation Strategy presented by the Interagency Scientific Committee in their report: "A Conservation Strategy for the Northern Spotted Owl," to National Forest lands within the range of the northern spotted owl.

LEGEND

- National Forest (not reserved)
- Wilderness, National Monument, National Recreation Area
- Bureau of Land Management
- National Park Service
- Other Federal Lands
- State Lands
- Indian Reservations
- State Boundary
- Forest Boundary
- Reserved Lands Boundary
- County Boundary
- Roads

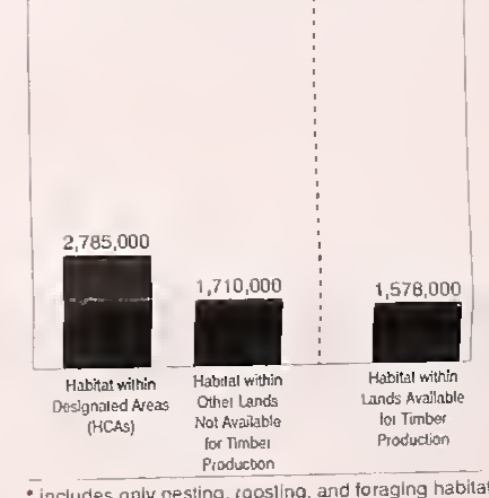
Designated Areas Managed Primarily For Spotted Owl Habitat

Habitat Conservation Areas (HCAs)
(Includes Category 3 HCAs not mapped on the ISC conservation strategy maps.)

NOTES:

**Acres of Spotted Owl Habitat*
Alternative B**

(Data is for all 17 National Forests included in this analysis)

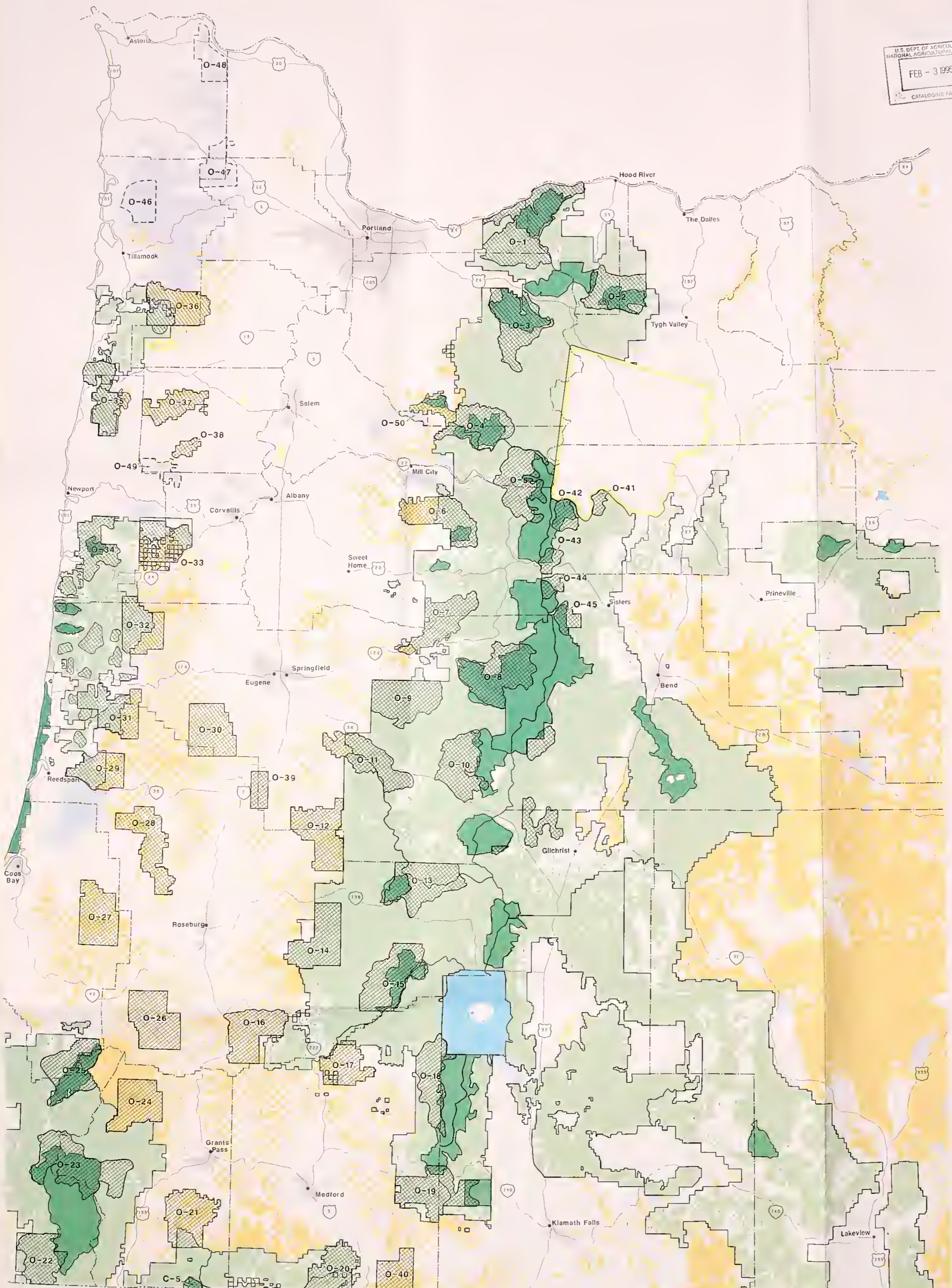


* includes only nesting, roosting, and foraging habitat

- Schematic map; not to scale; maps intended for display purposes only.
- Alternative applies only to National Forest System lands.
- Due to their small size, Category 4 Habitat Conservation Areas are not displayed.

USDA Forest Service

Map Basis: BLM State Map, 1992, Land Status Revised in 1995.



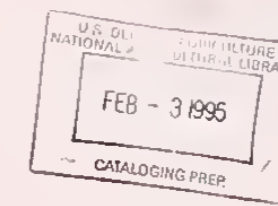
Alternative A (No Action)

Spotted Owl Habitat Areas (SOHAs)

Northern Spotted Owl
Final Environmental
Impact Statement

State of Oregon

Approximate Scale 1:700,000
1992



Alternative A would manage the National Forests by using the established Spotted Owl Habitat Areas (SOHAs) as prescribed in the Records of Decision for two Regional Guides. Oregon and Washington National Forests use the Pacific Northwest Regional Guide as amended in 1988. California National Forests use the Pacific Southwest Regional Guide dated 1984.

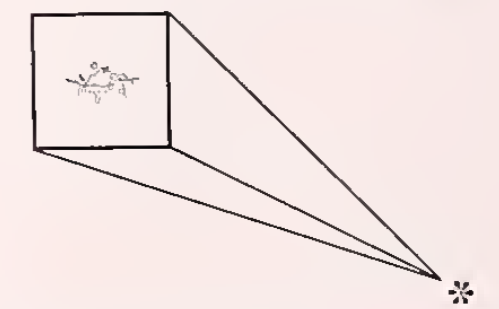
LEGEND

- National Forest (not reserved)
- Wilderness, National Monument, National Recreation Area
- Bureau of Land Management
- National Park Service
- Other Federal Lands
- State Lands
- Indian Reservations

- State Boundary
- Forest Boundary
- Reserved Lands Boundary
- County Boundary
- Roads

Designated Areas Managed Primarily For Spotted Owl Habitat

Spotted Owl Habitat Areas (SOHAs)

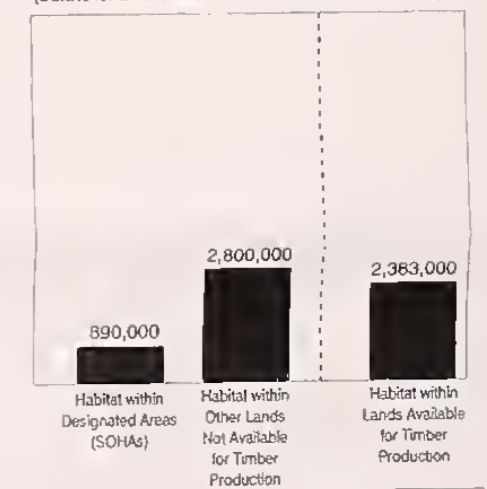


Spotted Owl Habitat Areas (SOHAs) vary in size by physiographic provinces. Due to map scale SOHAs are graphically displayed as an asterisk, as illustrated above. The asterisks are intended to show the number and relative distribution of SOHAs, not the actual acres.

NOTES:

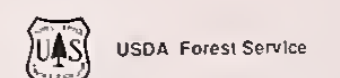
Acres of Spotted Owl Habitat*
Alternative A

(Data is for all 17 National Forests included in this analysis)

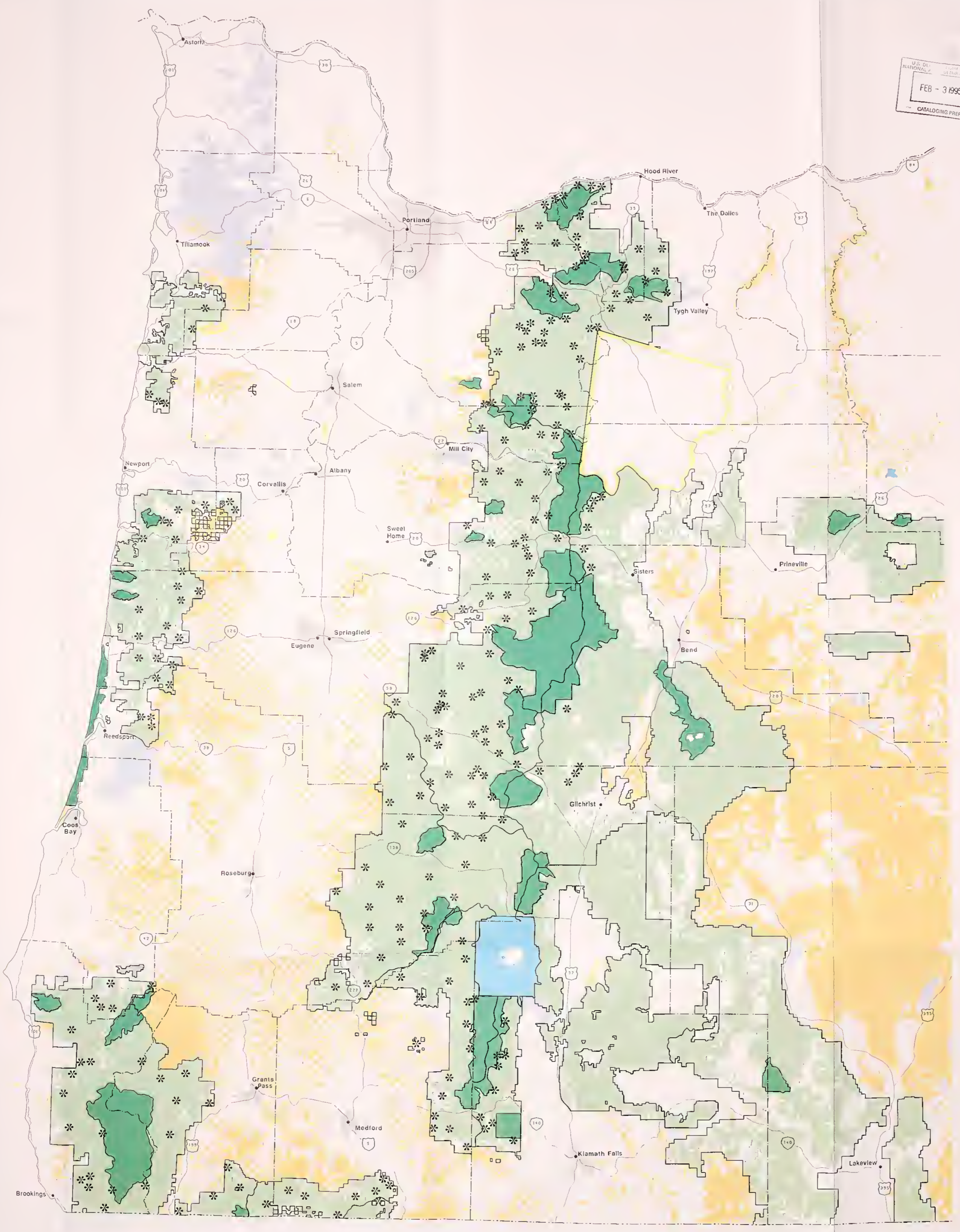


* Includes only nesting, roosting, and toring habitat

- Schematic map; not to scale; maps intended for display purposes only.
- Alternative applies only in National Forest.



Map Base: 8L11 State Map, 1982, Land Status Revised in 1985.



U.S. DEPT. OF AGRICULTURE
 NATIONAL AGRICULTURAL LIBRARY
 FEB - 3 1995
 CATALOGING PREP

Alternative E
Multi-Resource Strategy
Northern Spotted Owl
Final Environmental Impact Statement
State of California

Approximate Scale 1:700,000
 1992

This Alternative would apply "A Multi-Resource Strategy for Conservation of the Northern Spotted Owl" to National Forests within the range of the northern spotted owl. This strategy was developed by the National Forest Products Association and American Forest Council.

LEGEND

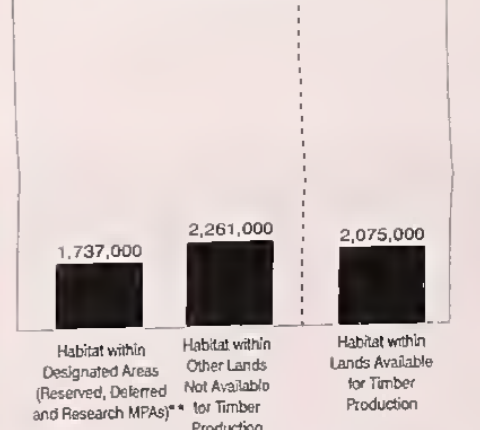
- National Forest (not reserved)
- Wilderness, National Monument, National Recreation Area
- Bureau of Land Management
- National Park Service
- Other Federal Lands
- State Lands
- Indian Reservations
- State Boundary
- Forest Boundary
- Reserved Lands Boundary
- County Boundary
- Roads

- Connecting Habitat or Managed as Connecting Habitat
- Designated Areas Managed Primarily For Spotted Owl Habitat
- Reserved and Deferred Multiple Pair Areas
- Research Multiple Pair Areas

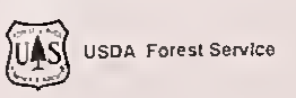
NOTES:

Acres of Spotted Owl Habitat* Alternative E

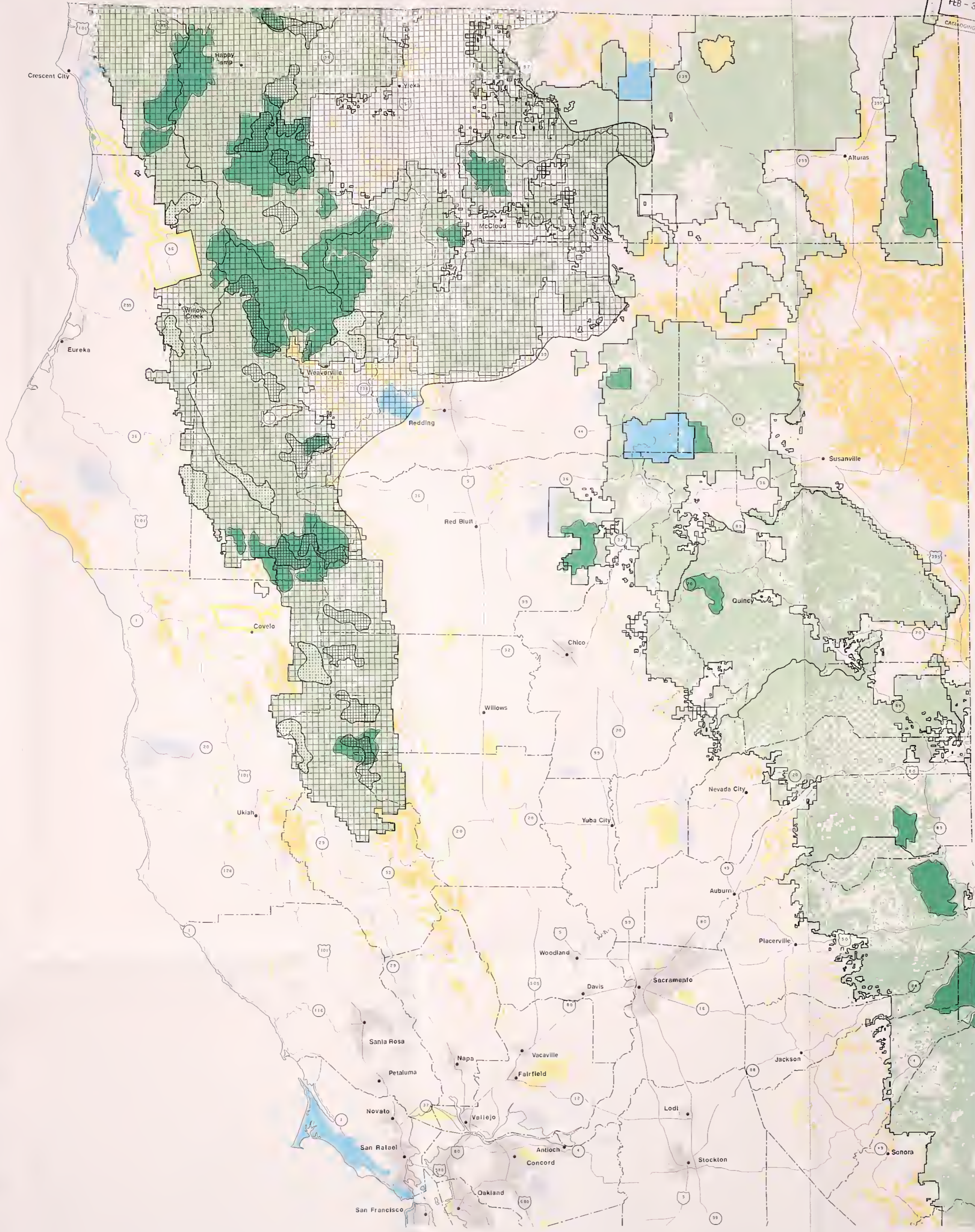
(Data is for all 17 National Forests included in this analysis)



- * Includes only nesting, roosting, and foraging habitat
- ** Includes 528,000 acres of Research MPAs from which limited harvest is permitted
- Schematic map; not to scale; maps intended for display purposes only.
- Alternative applies only in National Forest.
- Non-National Forest designated areas are not finalized. NFPA/AFC intend to further refine mapped areas outside of the National Forest System as more complete information becomes available.



Map Base: BLM State Map, 1988. Original Scale, 1,750,000 State Land Status Provided by the CDF, 1990



U.S. DEPT. OF AGRICULTURE
 NATIONAL AGRICULTURAL LIBRARY
 FEB - 3 1995
 CARROLLING VES

Alternative D

**ISC Conservation Strategy
 Plus All Owl Habitat**

**Northern Spotted Owl
 Final Environmental
 Impact Statement**

State of California

Approximate Scale 1:700,000
 1992

This alternative would apply to the Conservation Strategy presented by the Interagency Scientific Committee in their 1990 report, "A Conservation Strategy for the Northern Spotted Owl," to National Forest lands within the range of the northern spotted owl. The standards and guidelines for Habitat Conservation Areas (HCAs) would apply to the HCAs and to all nest-ing, roosting, and foraging spotted owl habitat.

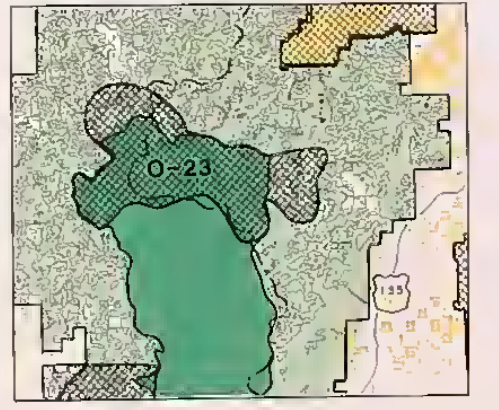
LEGEND

- National Forest (not reserved)
- Wilderness, National Monument, National Recreation Area
- Bureau of Land Management
- National Park Service
- Other Federal Lands
- State Lands
- Indian Reservations
- State Boundary
- Forest Boundary
- Reserved Lands Boundary
- County Boundary
- Roads

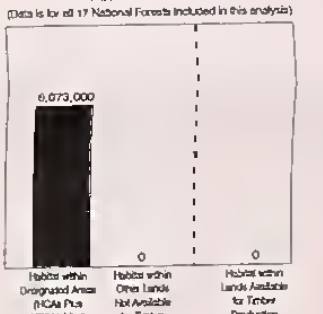
Designated Areas Managed Primarily For Spotted Owl Habitat

- Habitat Conservation Areas (HCAs)**
 (Includes Category 3 HCAs not mapped on the ISC conservation strategy maps.)
- Additional Spotted Owl Nesting, Roosting, and Foraging Habitat.**

Spotted owl nesting, roosting, and foraging habitat is comprised of many forest stands as illustrated by the map sample below. Because of the map scale, these lands were generalized to show the relative distribution of owl habitat throughout the range.



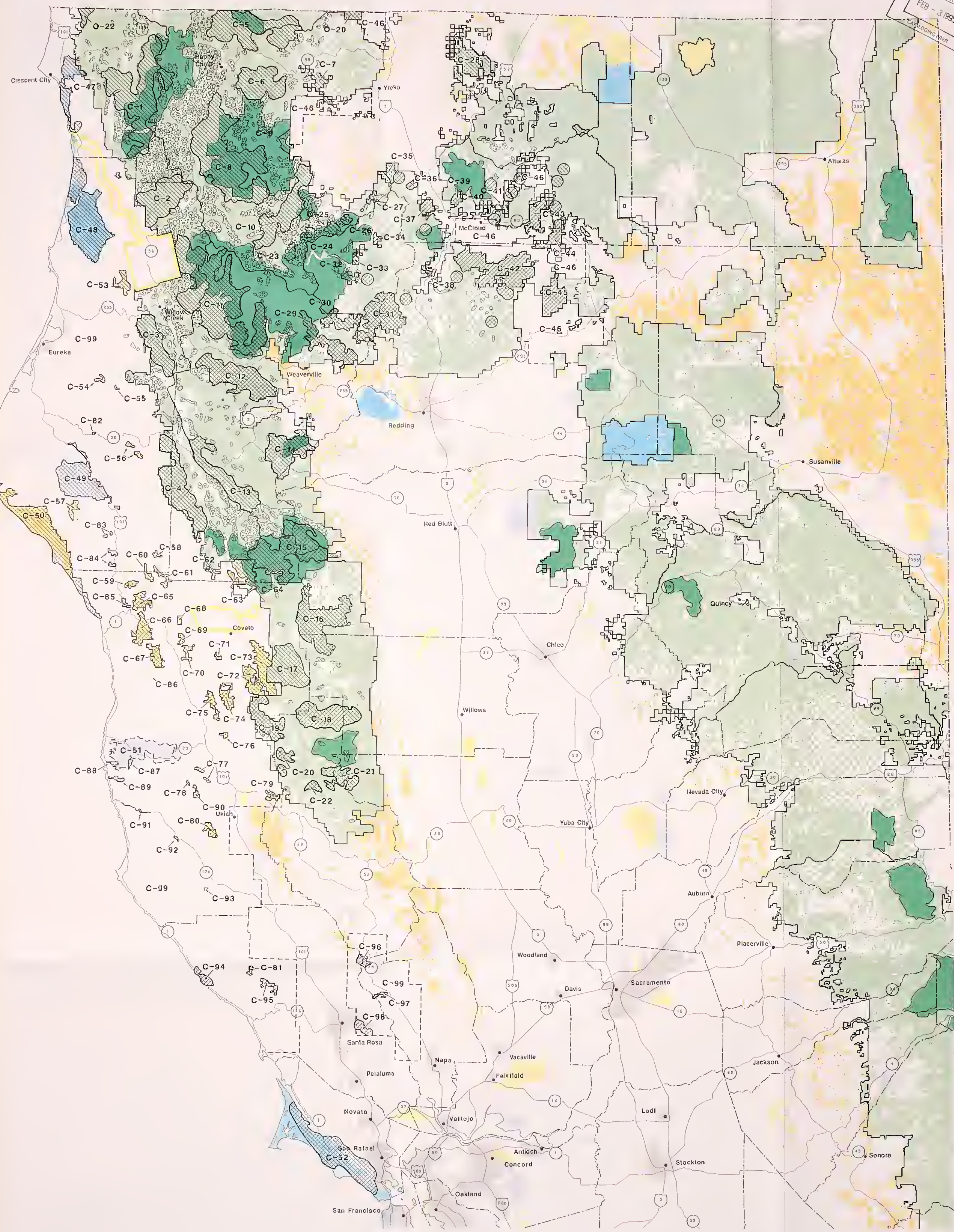
**NOTES:
 Acres of Spotted Owl Habitat*
 Alternative D**



- Schematic map; not to scale; maps intended for display purposes only.
- Alternative applies only in National Forest.
- Due to their small size, Category 4 Habitat Conservation Areas are not displayed.
- Owl habitat depictions are subject to corrections as new information becomes available.



Map Base: BLM State Map, 1988. Original Scale, 1,750,000 State Land Status Provided by the CDF, 1990.



ISC Conservation Strategy Plus Critical Habitat Units

Northern Spotted Owl Final Environmental Impact Statement

State of California

Approximate Scale 1:700,000
1992

This alternative would apply to the Conservation Strategy presented by the Interagency Scientific Committee in their 1990 report: "A Conservation Strategy for the Northern Spotted Owl," to National Forest lands within the range of the northern spotted owl. The standards and guidelines for Habitat Conservation Areas (HCAs) would apply to the HCAs and to the critical habitat identified by the Fish and Wildlife Service.

LEGEND

- National Forest (not reserved)
- Wilderness, National Monument, National Recreation Area
- Bureau of Land Management
- National Park Service
- Other Federal Lands
- State Lands
- Indian Reservations
- State Boundary
- Forest Boundary
- Reserved Lands Boundary
- County Boundary
- Roads

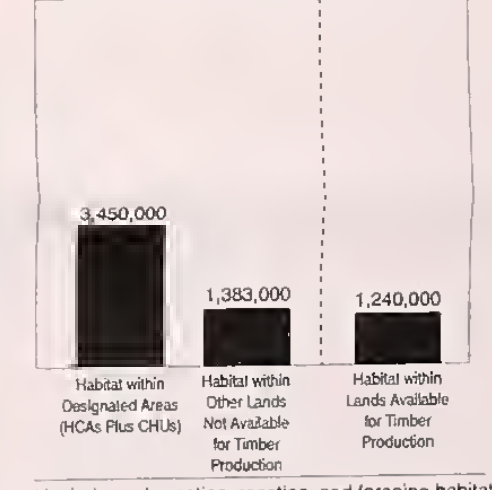
Designated Areas Managed Primarily For Spotted Owl Habitat

- Habitat Conservation Areas (HCAs) (Includes Category 3 HCAs not mapped on the ISC conservation strategy maps.)
- Additional Area Added to HCAs as Critical Habitat in the U.S. Fish and Wildlife Rule.

NOTES:

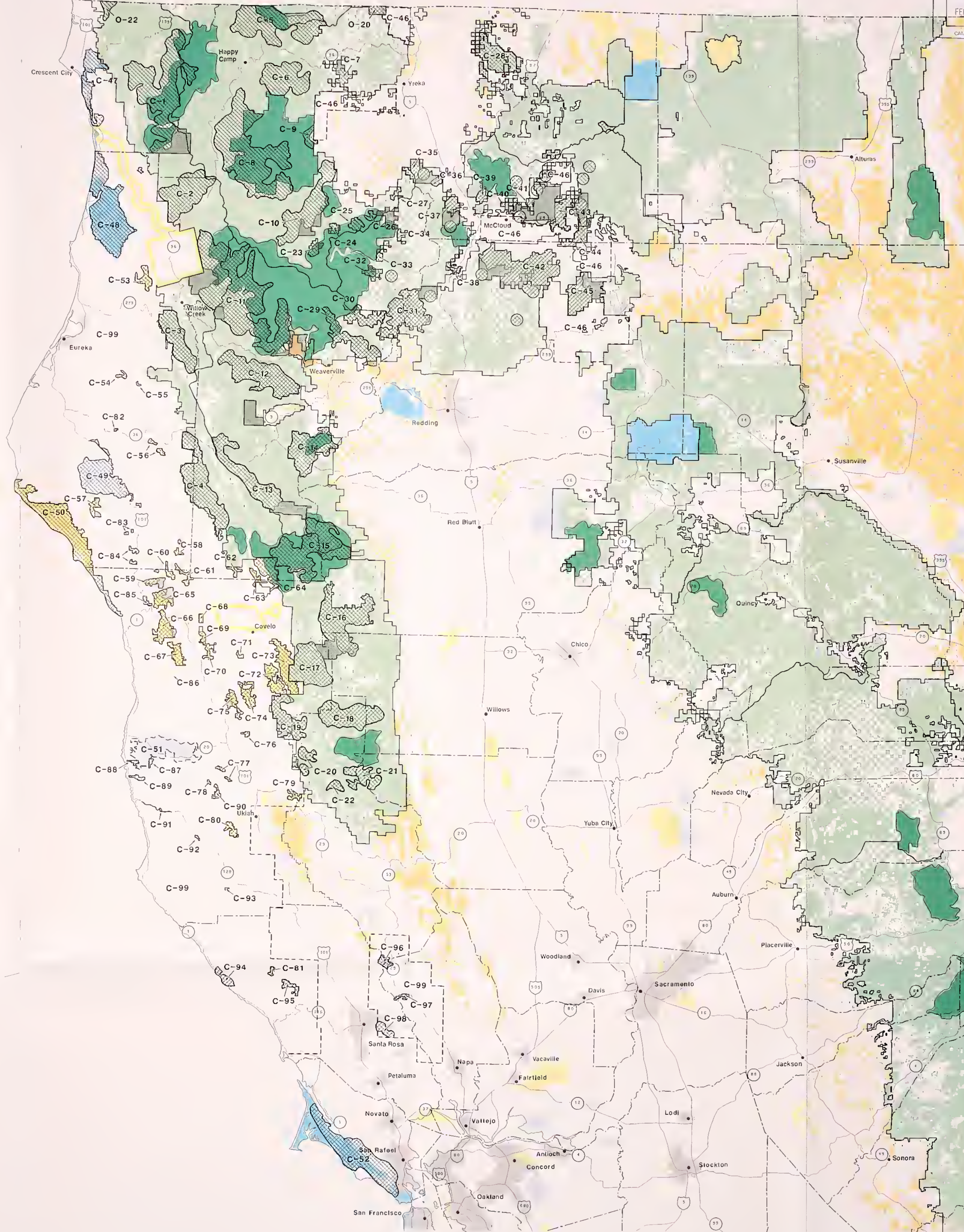
Acres of Spotted Owl Habitat* Alternative C

(Data is for all 17 National Forests included in this analysis)



* includes only nesting, roosting, and foraging habitat

- Schematic map; not to scale; maps intended for display purposes only.
- Alternative applies only in National Forest.
- Due to their small size, Category 4 Habitat Conservation Areas are not displayed.



**Alternative B
 (Proposed Action)**

**Interagency Scientific
 Committee (ISC)
 Conservation Strategy**

**Northern Spotted Owl
 Final Environmental
 Impact Statement**

State of California

Approximate Scale 1:700,000
 1992

This alternative would apply the Conservation Strategy presented by the Interagency Scientific Committee in their report: "A Conservation Strategy for the Northern Spotted Owl," to National Forest lands within the range of the northern spotted owl.

LEGEND

- National Forest (not reserved)
- Wilderness, National Monument, National Recreation Area
- Bureau of Land Management
- National Park Service
- Other Federal Lands
- State Lands
- Indian Reservations
- State Boundary
- Forest Boundary
- Reserved Lands Boundary
- County Boundary
- Roads

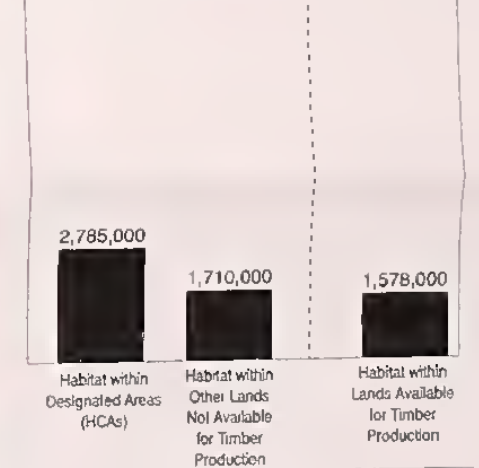
Designated Areas Managed Primarily For Spotted Owl Habitat

- Habitat Conservation Areas (HCAs)**
 (Includes Category 3 HCAs not mapped on the ISC conservation strategy maps.)

NOTES:

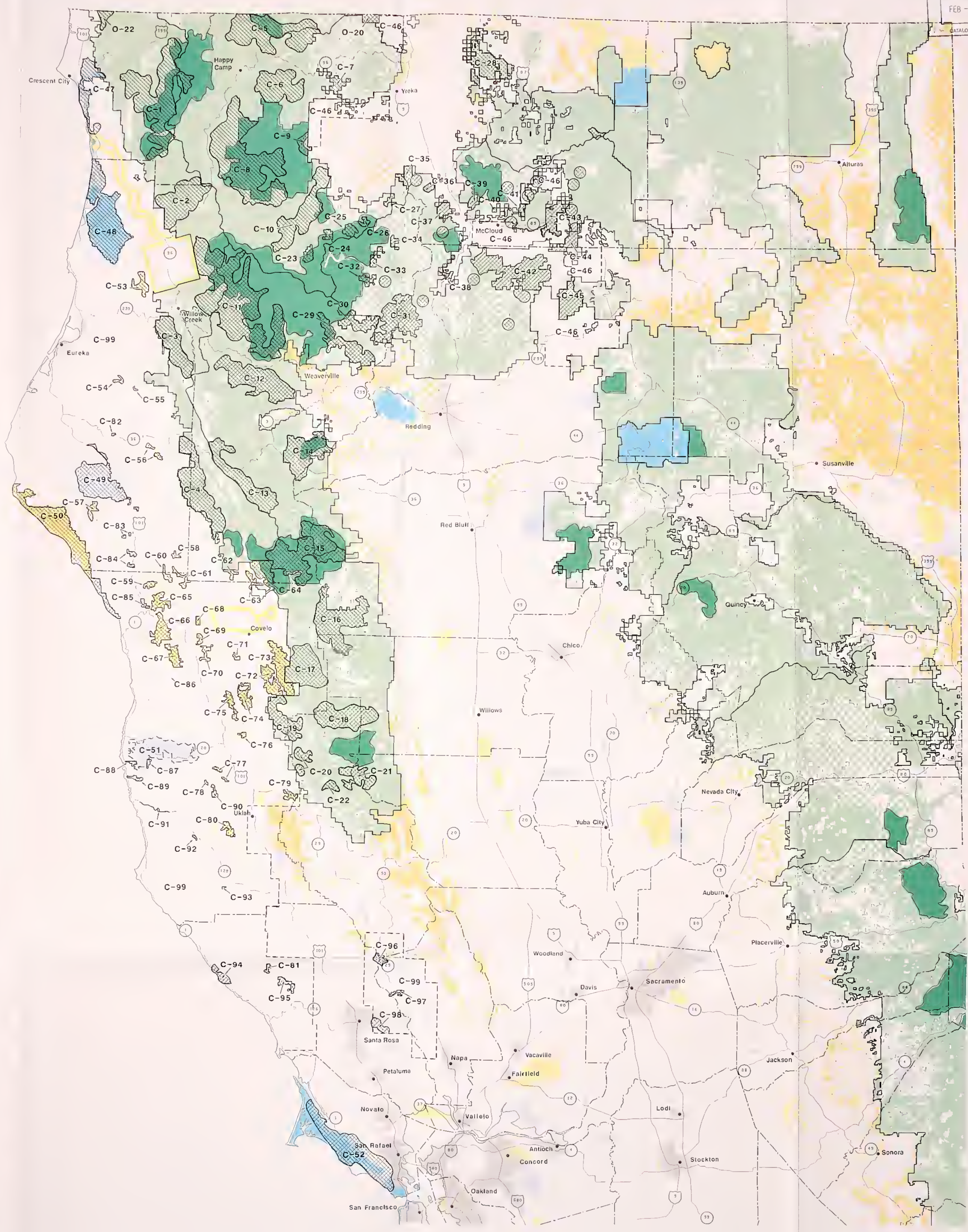
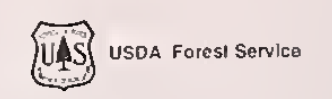
**Acres of Spotted Owl Habitat*
 Alternative B**

(Data is for all 17 National Forests included in this analysis)



* includes only nesting, roosting, and foraging habitat

- Schematic map; not to scale; maps intended for display purposes only.
- Alternative applies only in National Forest.
- Due to their small size, Category 4 Habitat Conservation Areas are not displayed.



U.S. DEPT. OF AGRICULTURE
 NATIONAL AGRICULTURAL LIBRARY
 FEB - 3 1995
 CALIF. FOREST SERV.

Alternative A (No Action)

Spotted Owl Habitat Areas (SOHAs)

**Northern Spotted Owl
 Final Environmental
 Impact Statement**

State of California

Approximate Scale 1:700,000
 1992

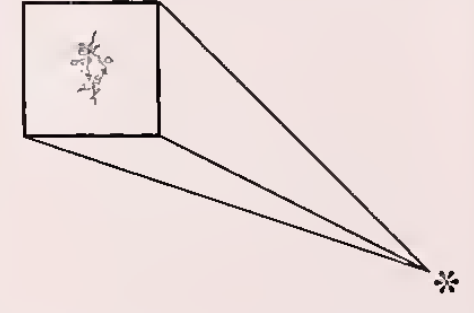
Alternative A would manage the National Forests by using the established Spotted Owl Habitat Areas (SOHAs) as prescribed in the Records of Decision for two Regional Guides. Oregon and Washington National Forests use the Pacific Northwest Regional Guide as amended in 1988. California National Forests use the Pacific Southwest Regional Guide dated 1984.

LEGEND

- National Forest (not reserved)
- Wilderness, National Monument, National Recreation Area
- Bureau of Land Management
- National Park Service
- Other Federal Lands
- State Lands
- Indian Reservations
- State Boundary
- Forest Boundary
- Reserved Lands Boundary
- County Boundary
- Roads

Designated Areas Managed Primarily For Spotted Owl Habitat

Spotted Owl Habitat Areas (SOHAs)

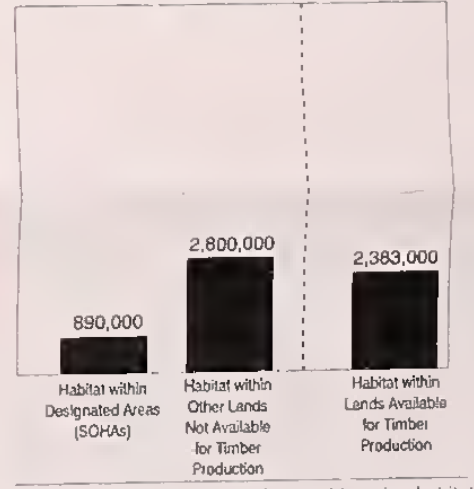


Spotted Owl Habitat Areas (SOHAs) vary in size by physiographic provinces. Due to map scale SOHAs are graphically displayed as an asterisk, as illustrated above. The asterisks are intended to show the number and relative distribution of SOHAs, not the actual notes.

NOTES:

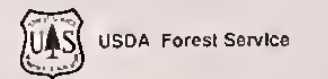
**Acres of Spotted Owl Habitat*
 Alternative A**

(Data is for all 17 National Forests included in this analysis)



* includes only nesting, roosting, and foraging habitat

- Schematic map; not to scale; maps intended for display purposes only.
- Alternative applies only in National Forest.



U.S. DEPT. OF AGRICULTURE
 NATIONAL AGRICULTURAL LIBRARY
 FEB - 3 1995
 CATALOGING PREP.

Alternative C
ISC Conservation Strategy
Plus Critical Habitat Units
Northern Spotted Owl
Final Environmental
Impact Statement
State of Oregon

Approximate Scale 1:700,000
 1992

This alternative would apply to the Conservation Strategy presented by the Interagency Scientific Committee in their 1990 report: "A Conservation Strategy for the Northern Spotted Owl, to National Forest lands within the range of the northern spotted owl. The standards and guidelines for Habitat Conservation Areas (HCAs) would apply to the HCAs and to the critical habitat identified by the Fish and Wildlife Service.

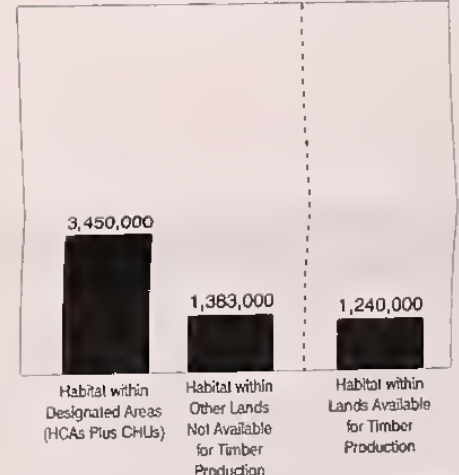
LEGEND

- National Forest (not reserved)
- Wilderness, National Monument, National Recreation Area
- Bureau of Land Management
- National Park Service
- Other Federal Lands
- State Lands
- Indian Reservations
- State Boundary
- Forest Boundary
- Reserved Lands Boundary
- County Boundary
- Roads

Designated Areas Managed Primarily For Spotted Owl Habitat

- Habitat Conservation Areas (HCAs)**
 (Includes Category 3 HCAs not mapped on the ISC conservation strategy maps.)
- Additional Area Added to HCAs as Critical Habitat in the U.S. Fish and Wildlife Rule.**

NOTES:
Acres of Spotted Owl Habitat*
Alternative C
 (Data is for all 17 National Forests included in this analysis)



* includes only nesting, roosting, and foraging habitat

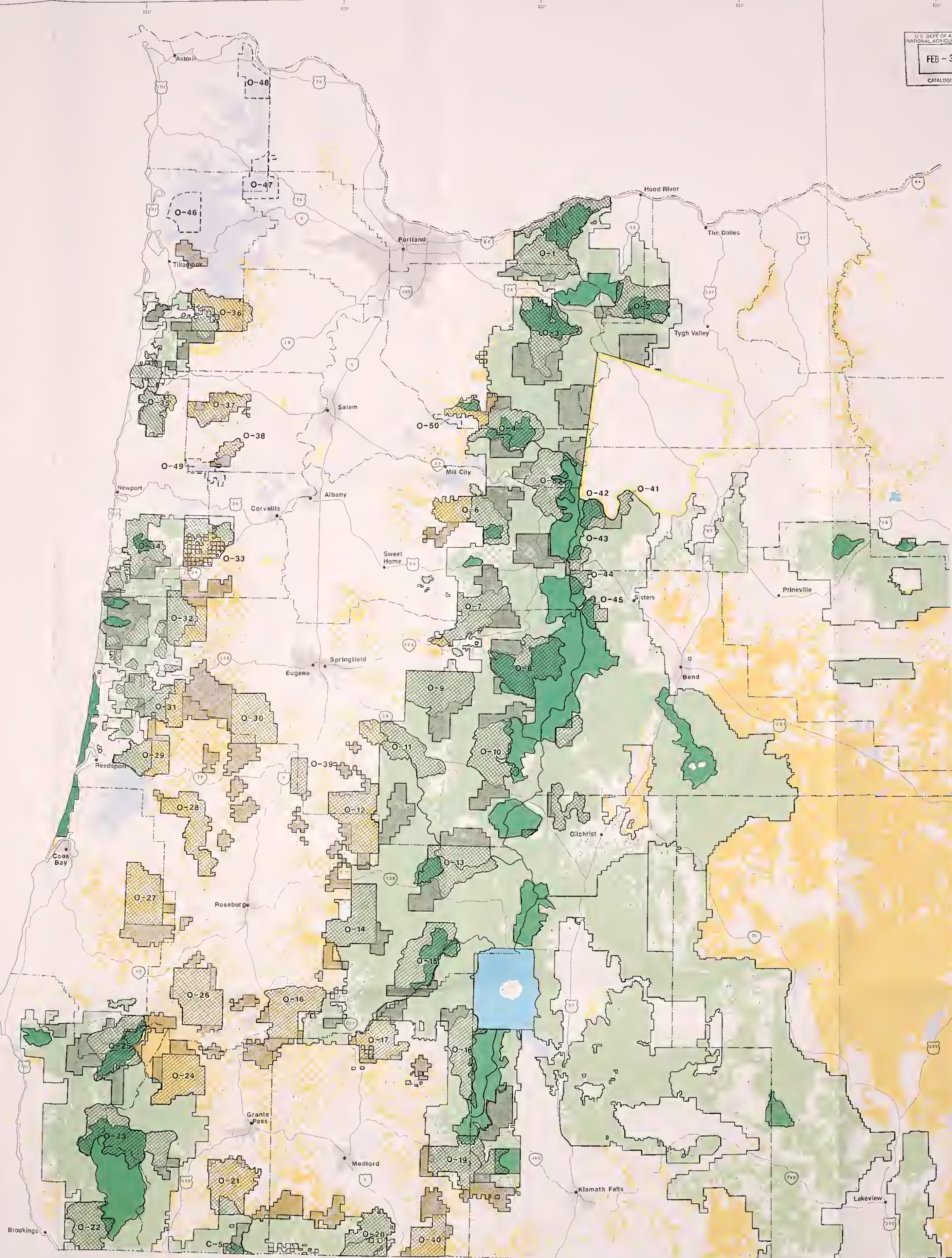
- Schematic map; not to scale; maps intended for display purposes only.

- Alternative applies only to National Forest System lands.

- Due to their small size, Category 4 Habitat Conservation Areas are not displayed.



Map Base: BLM State Map, 1982. Land Status Revised in 1995.



Alternative D

ISC Conservation Strategy
Plus All Owl Habitat

Northern Spotted Owl
Final Environmental
Impact Statement

State of Oregon

Approximate Scale 1:700,000
1992

U.S. DEPT. OF AGRICULTURE
NATIONAL AGRICULTURAL LIBRARY
FEB - 3 1995
CATALOGING PREP

This alternative would apply to the Conservation Strategy presented by the Interagency Scientific Committee in their 1990 report: "A Conservation Strategy for the Northern Spotted Owl" to National Forest lands within the range of the northern spotted owl. The standards and guidelines for Habitat Conservation Areas (HCAs) would apply to the HCAs and to all nesting, roosting, and foraging spotted owl habitat.

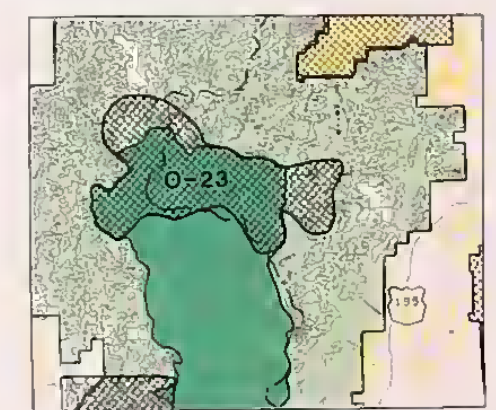
LEGEND

- National Forest (not reserved)
- Wilderness, National Monument, National Recreation Area
- Bureau of Land Management
- National Park Service
- Other Federal Lands
- State Lands
- Indian Reservations
- State Boundary
- Forest Boundary
- Reserved Lands Boundary
- County Boundary
- Roads

Designated Areas Managed Primarily For Spotted Owl Habitat

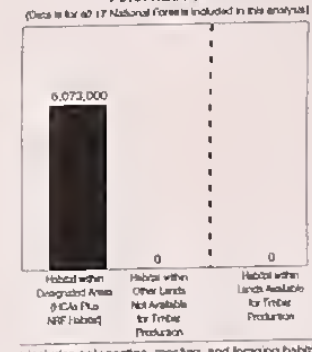
- Habitat Conservation Areas (HCAs) (Includes Category 3 HCAs not mapped on the ISC conservation strategy maps.)
- Additional Area Added to HCAs as Critical Habitat in the U.S. Fish and Wildlife Rule.

Spotted owl nesting, roosting, and foraging habitat is comprised of many forest stands as illustrated by the map sample below. Because of the map scale, these lands were generated to show the relative distribution of owl habitat throughout the range.



NOTES:

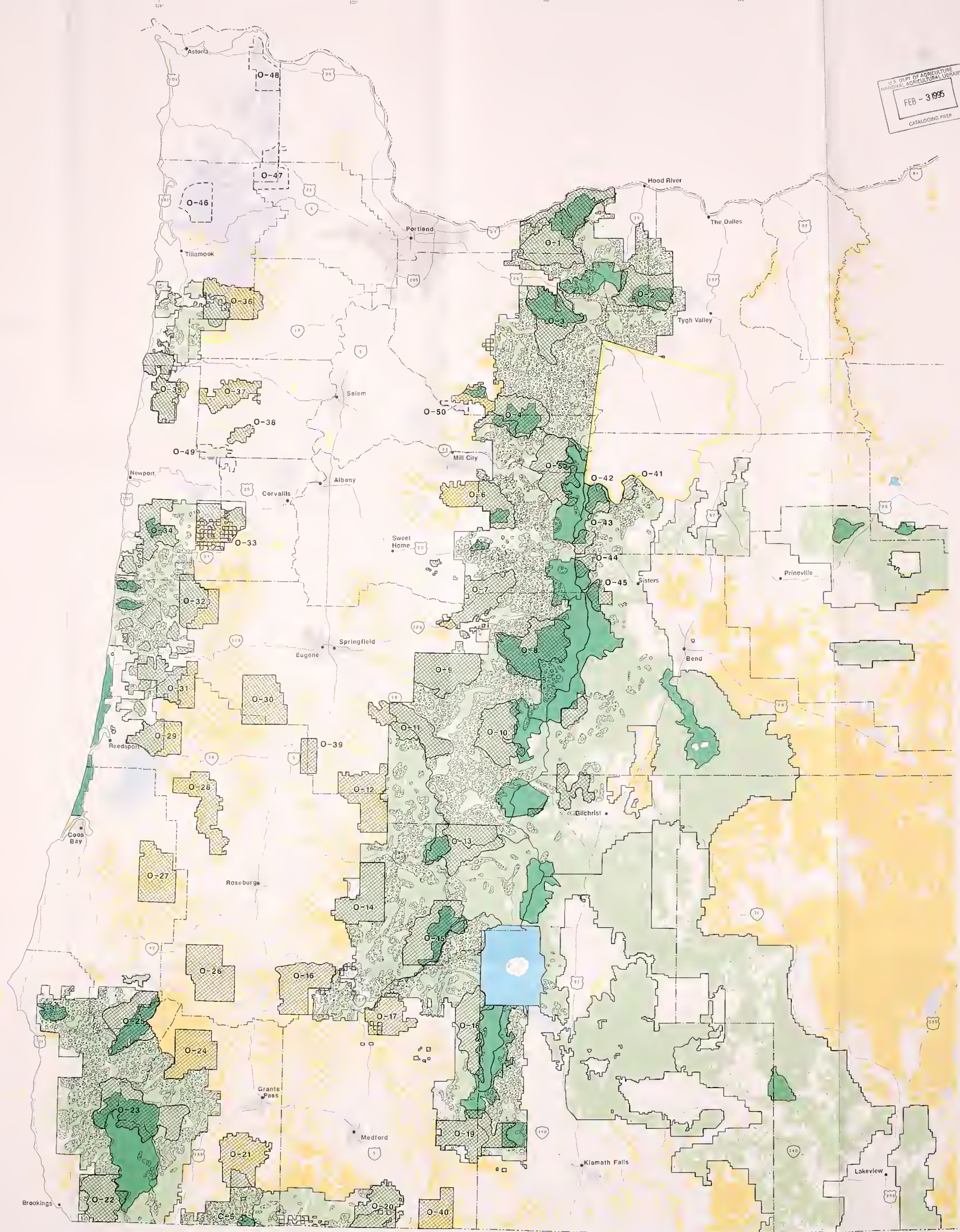
Acres of Spotted Owl Habitat*
Alternative D
(Data is for all 17 National Forests included in this analysis)



- Schematic map; not to scale; maps intended for display purposes only.
- Alternative applies only in National Forest.
- Due to their small size, Category 4 Habitat Conservation Areas are not displayed.
- Owl habitat depictions are subject to corrections as new information becomes available.



Map Base: BLM State Map, 1982, Land Status Revised in 1985.



Alternative E

Multi-Resource Strategy

Northern Spotted Owl
Final Environmental
Impact Statement

State of Oregon

Approximate Scale 1:700,000
1992

U.S. DEPT. OF AGRICULTURE
NATIONAL AGRICULTURAL LIBRARY
FEB - 3 1995
CATALOGING PRER.

This Alternative would apply "A Multi-Resource Strategy for Conservation of the Northern Spotted Owl" to National Forests within the range of the northern spotted owl. This strategy was developed by the National Forest Products Association and American Forest Council.

LEGEND

- National Forest (not reserved)
- Wilderness, National Monument, National Recreation Area
- Bureau of Land Management
- National Park Service
- Other Federal Lands
- State Lands
- Indian Reservations

- State Boundary
- Forest Boundary
- Reserved Lands Boundary
- County Boundary
- Roads

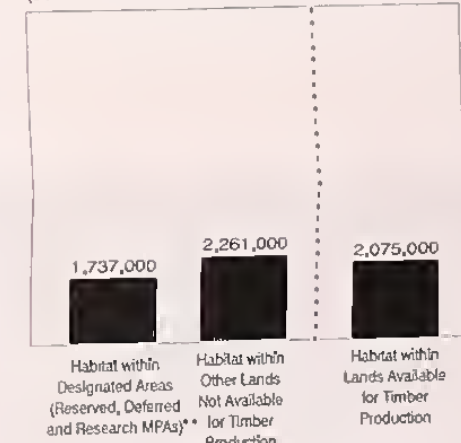
Designated Areas Managed Primarily For Spotted Owl Habitat

- Northern Spotted Owl Management Zone
- Connecting Habitat or Managed as Connecting Habitat
- Designated Areas Managed Primarily For Spotted Owl Habitat
- Reserved and Deferred Multiple Pair Areas
- Research Multiple Pair Areas

NOTES:

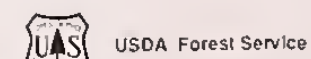
Acres of Spotted Owl Habitat*
Alternative E

(Data is for all 17 National Forests included in this analysis)

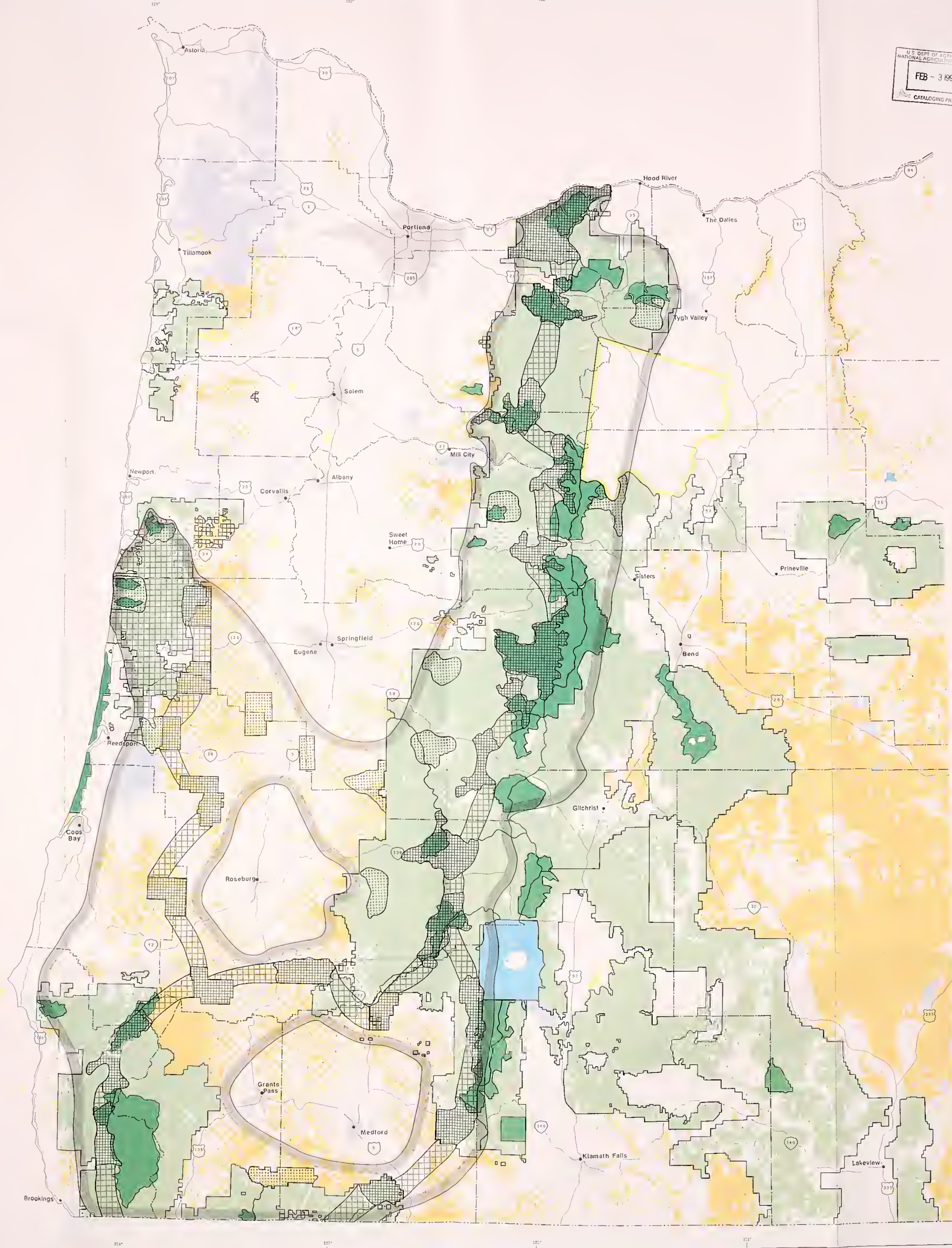


- * includes only nesting, roosting, and foraging habitat
- ** includes 528,000 acres of Research MPAs from which limited harvest is permitted

- Schematic map; not to scale; maps intended for display purposes only.
- Alternative applies only in National Forest.
- Non-National Forest designated areas are not finalized. NFPA/AFC intend to further refine mapped areas outside of the National Forest System as more complete information becomes available.



Map Base: BLM State Map, 1982, Land Status Revised in 1985.



Alternative A (No Action)

Spotted Owl Habitat Areas (SOHAs)

**Northern Spotted Owl
 Final Environmental
 Impact Statement**

State of Washington

Approximate Scale 1:700,000
 1992

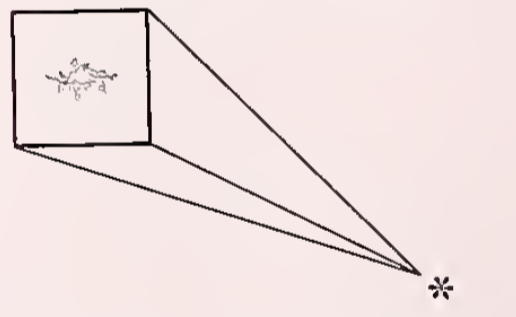
Alternative A would manage the National Forests by using the established Spotted Owl Habitat Areas (SOHAs) as prescribed in the Records of Decision for two Regional Guides, Oregon and Washington National Forests use the Pacific Northwest Regional Guide as amended in 1988. California National Forests use the Pacific Southwest Regional Guide dated 1984.

LEGEND

- National Forest (not reserved)
- Wilderness, National Monument, National Recreation Area
- Bureau of Land Management
- National Park Service
- Other Federal Lands
- State Lands
- Indian Reservations
- Forest Boundary
- Reserved Lands Boundary
- County Boundary
- State Boundary
- Roads

Designated Areas Managed Primarily For Spotted Owl Habitat

Spotted Owl Habitat Areas (SOHAs)

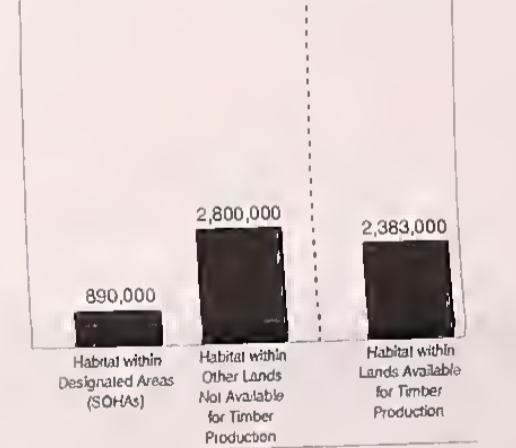


Spotted Owl Habitat Areas (SOHAs) vary in size by physiographic provinces. Due to map scale SOHAs are graphically displayed as an asterisk, as illustrated above. The asterisks are intended to show the number and relative distribution of SOHAs, not the actual acres.

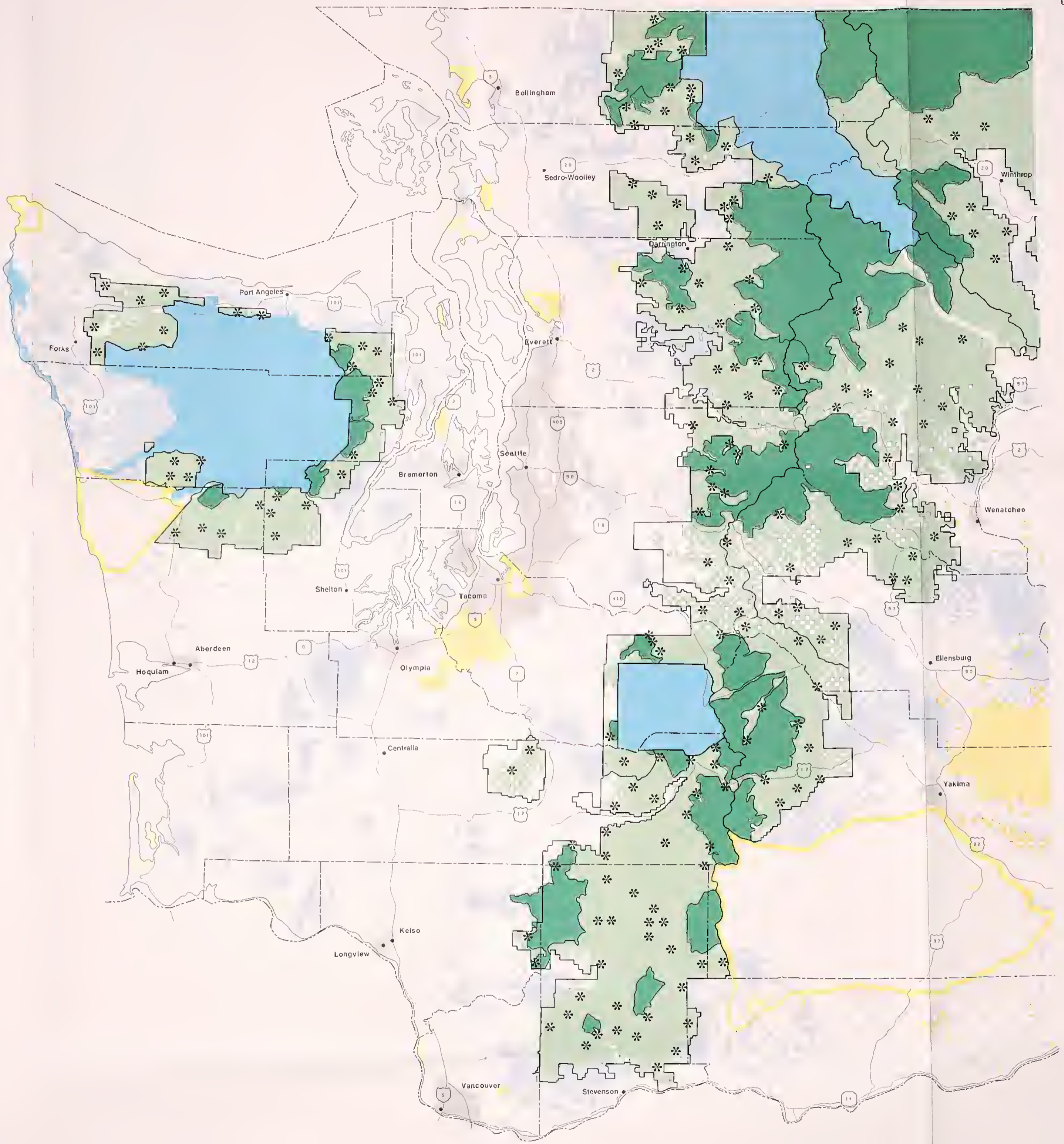
NOTES:

**Acres of Spotted Owl Habitat*
 Alternative A**

(Data is for all 17 National Forests included in this analysis)



- * includes only nesting, roosting, and foraging habitat
- Schematic map; not to scale; maps intended for display purposes only.
- Alternative applies only in National Forest.



U.S. DEPT. OF AGRICULTURE
 NATIONAL AGRICULTURAL LIBRARY
 FEB - 3 1995
 CATALOGING PREP

**Alternative B
 (Proposed Action)**

**Interagency Scientific
 Committee (ISC)
 Conservation Strategy**

**Northern Spotted Owl
 Final Environmental
 Impact Statement**

State of Washington

Approximate Scale 1:700,000
 1992

This alternative would apply the Conservation Strategy presented by the Interagency Scientific Committee in their report: "A Conservation Strategy for the Northern Spotted Owl," to National Forest lands within the range of the northern spotted owl.

LEGEND

- National Forest (not reserved)
- Wilderness, National Monument, National Recreation Area
- Bureau of Land Management
- National Park Service
- Other Federal Lands
- State Lands
- Indian Reservations
- Forest Boundary
- Reserved Lands Boundary
- County Boundary
- State Boundary
- Roads

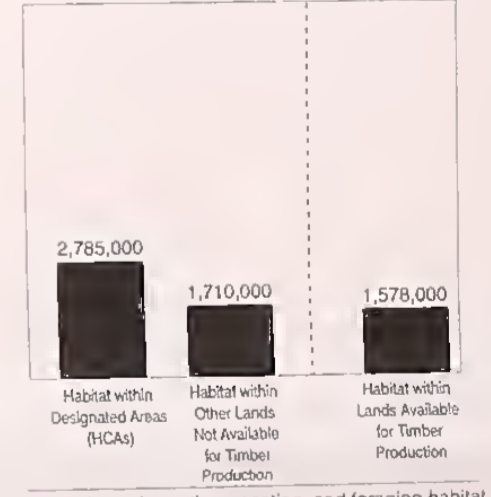
Designated Areas Managed Primarily For Spotted Owl Habitat

Habitat Conservation Areas (HCAs)
 (Includes Category 3 HCAs not mapped on the ISC conservation strategy maps.)

NOTES:

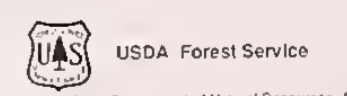
**Acres of Spotted Owl Habitat*
 Alternative B**

(Data is for all 17 National Forests included in this analysis)

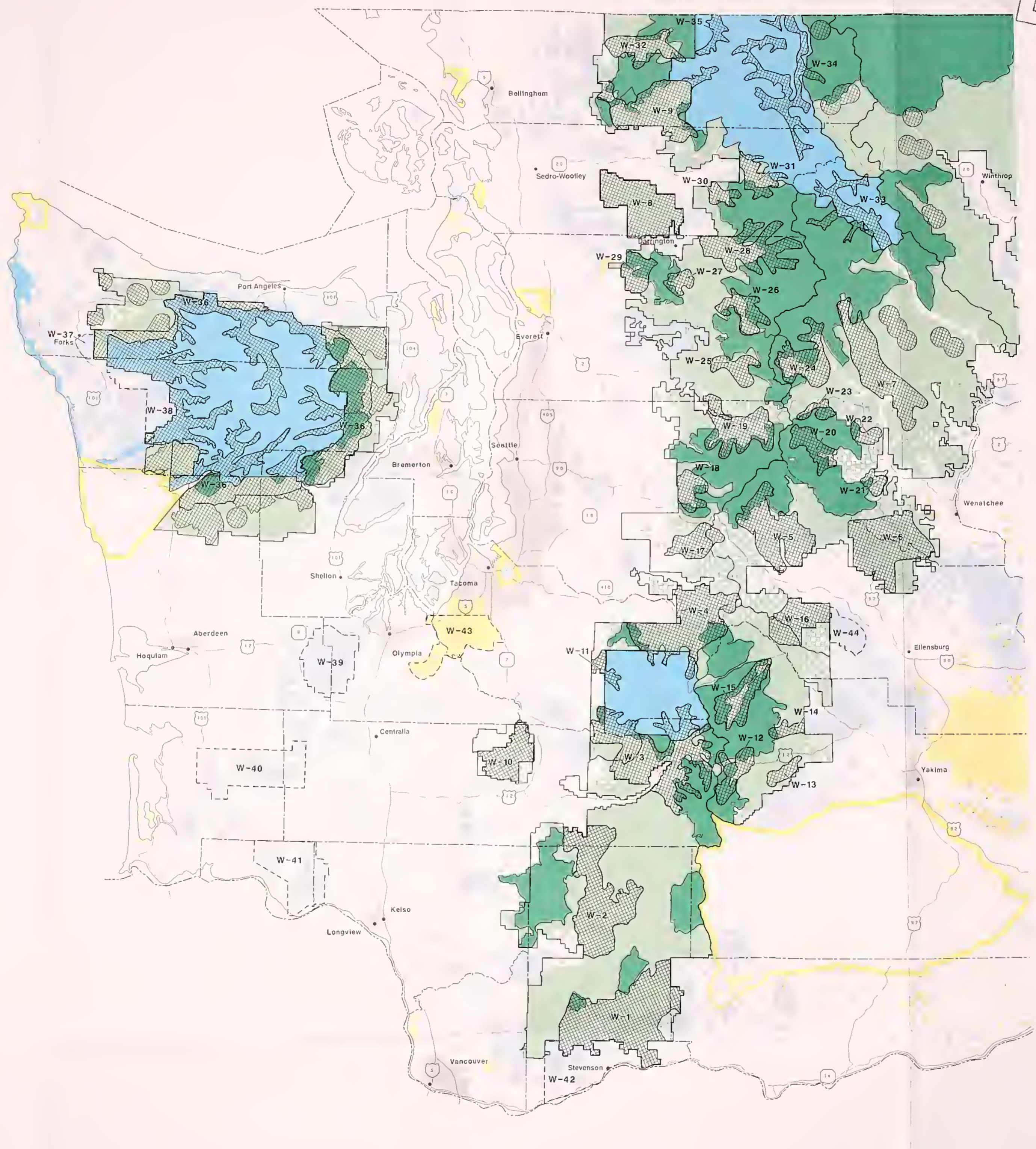


* includes only nesting, roosting, and foraging habitat

- Schematic map; not to scale; maps intended for display purposes only.
- Alternative applies only in National Forest.
- Due to their small size, Category 4 Habitat Conservation Areas are not displayed.



Map Base: Washington State Department of Natural Resources, 1988, Original Scale 1:750,000



U.S. DEPT. OF AGRICULTURE
 NATIONAL AGRICULTURAL LIBRARY
 FEB - 3 1995
 CATALOGING PREP

Alternative C

**ISC Conservation Strategy
 Plus Critical Habitat Units**

**Northern Spotted Owl
 Final Environmental
 Impact Statement**

State of Washington

Approximate Scale 1:700,000
 1992

This alternative would apply to the Conservation Strategy presented by the Interagency Scientific Committee in their 1990 report, "A Conservation Strategy for the Northern Spotted Owl," to National Forest lands within the range of the northern spotted owl. The standards and guidelines for Habitat Conservation Areas (HCAs) would apply to the HCAs and to the critical habitat identified by the Fish and Wildlife Service.

LEGEND

- National Forest (not reserved)
- Wilderness, National Monument, National Recreation Area
- Bureau of Land Management
- National Park Service
- Other Federal Lands
- State Lands
- Indian Reservations
- Forest Boundary
- Reserved Lands Boundary
- County Boundary
- State Boundary
- Roads

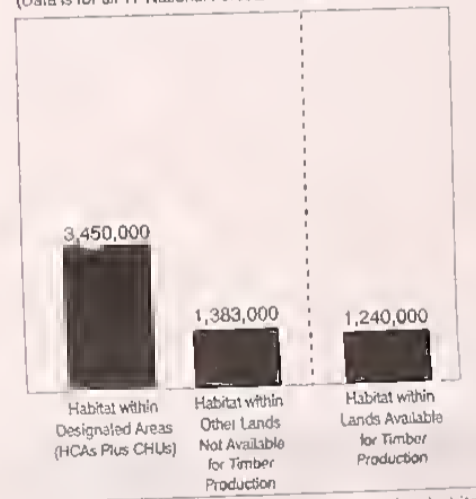
Designated Areas Managed Primarily For Spotted Owl Habitat

- Habitat Conservation Areas (HCAs) (Includes Category 3 HCAs not mapped on the ISC conservation strategy maps.)
- Additional Area Added to HCAs as Critical Habitat in the U.S. Fish and Wildlife Rule.

NOTES:

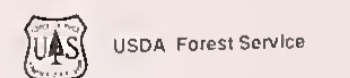
**Acres of Spotted Owl Habitat*
 Alternative C**

(Data is for all 17 National Forests included in this analysis)

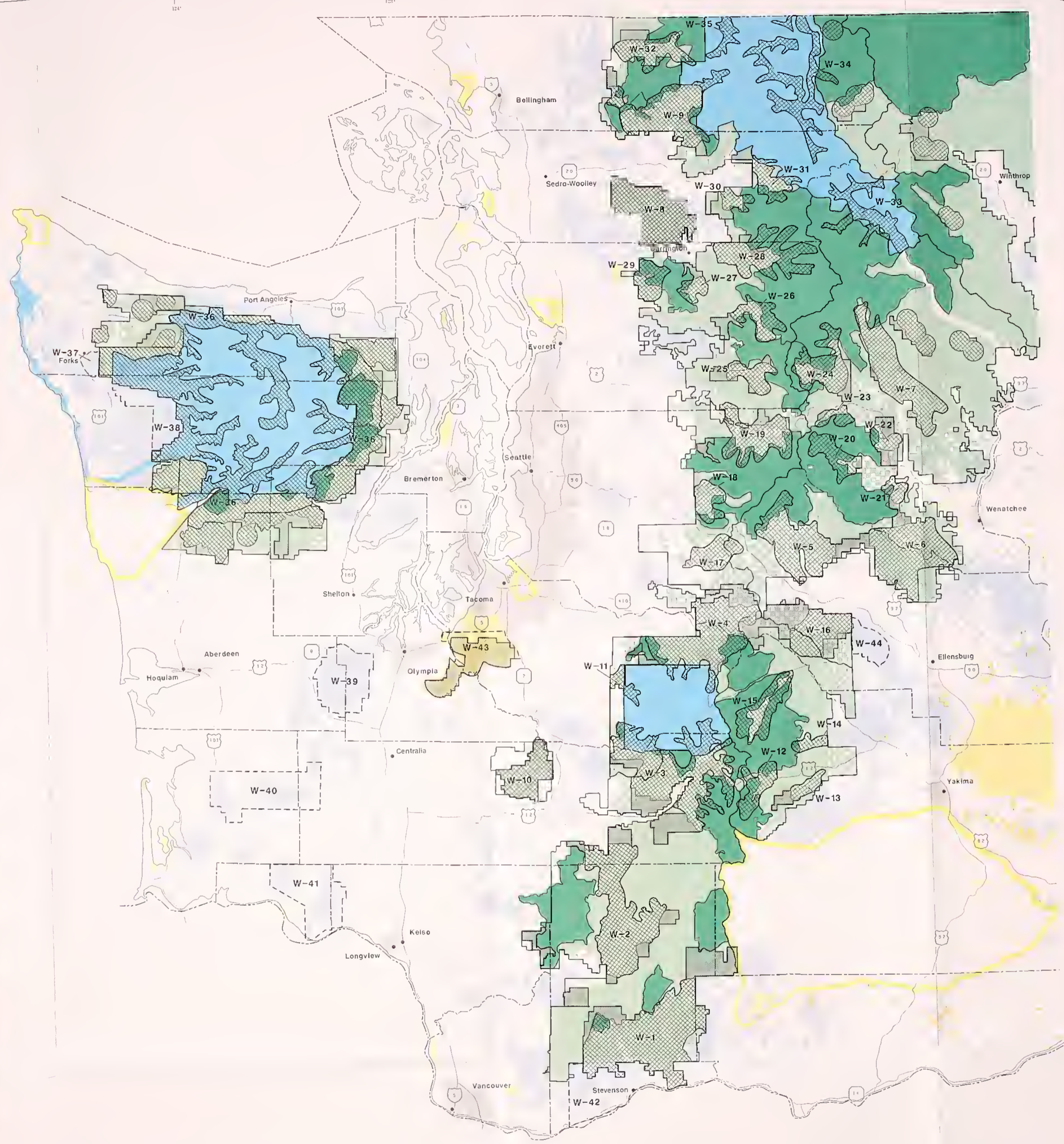


* Includes only nesting, roosting, and foraging habitat

- Schematic map; not to scale; maps intended for display purposes only.
- Alternative applies only in National Forest.
- Due to their small size, Category 4 Habitat Conservation Areas are not displayed.



Map Base: Washington State Department of Natural Resources, 1988, Original Scale 1:750,000



U.S. DEPT. OF AGRICULTURE
 NATIONAL AGRICULTURAL LIBRARY
 FEB - 3 1995
 CATALOGING PREP

Alternative D

ISC Conservation Strategy
 Plus All Owl Habitat

Northern Spotted Owl
 Final Environmental
 Impact Statement

State of Washington

Approximate Scale 1:700,000
 1992

This alternative would apply to the Conservation Strategy presented by the Interagency Scientific Committee in their 1990 report: "A Conservation Strategy for the Northern Spotted Owl," to National Forest lands within the range of the northern spotted owl. The standards and guidelines for Habitat Conservation Areas (HCAs) would apply to the HCAs and to all nesting, roosting, and foraging spotted owl habitat.

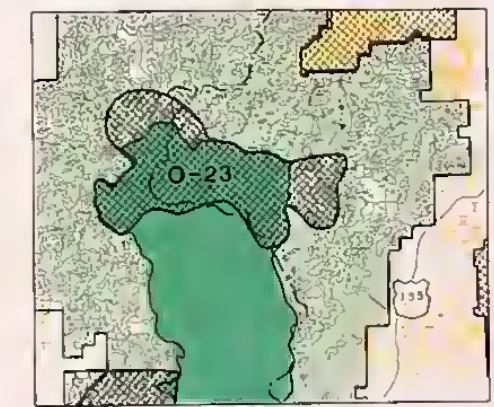
LEGEND

- National Forest (not reserved)
- Wilderness, National Monument, National Recreation Area
- Bureau of Land Management
- National Park Service
- Other Federal Lands
- State Lands
- Indian Reservations
- Forest Boundary
- Reserved Lands Boundary
- County Boundary
- State Boundary
- Roads

Designated Areas Managed Primarily For Spotted Owl Habitat

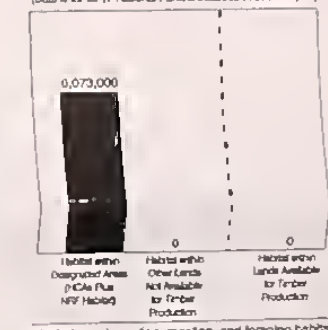
- Habitat Conservation Areas (HCAs) (Includes Category 3 HCAs not mapped on the ISC conservation strategy maps.)
- Additional Spotted Owl Nesting, Roosting, and Foraging Habitat.

Spotted owl nesting, roosting, and foraging habitat is comprised of many forest stands as illustrated by the map sample below. Because of the map scale, these lands were generalized to show the relative distribution of owl habitat throughout the range.



NOTES:

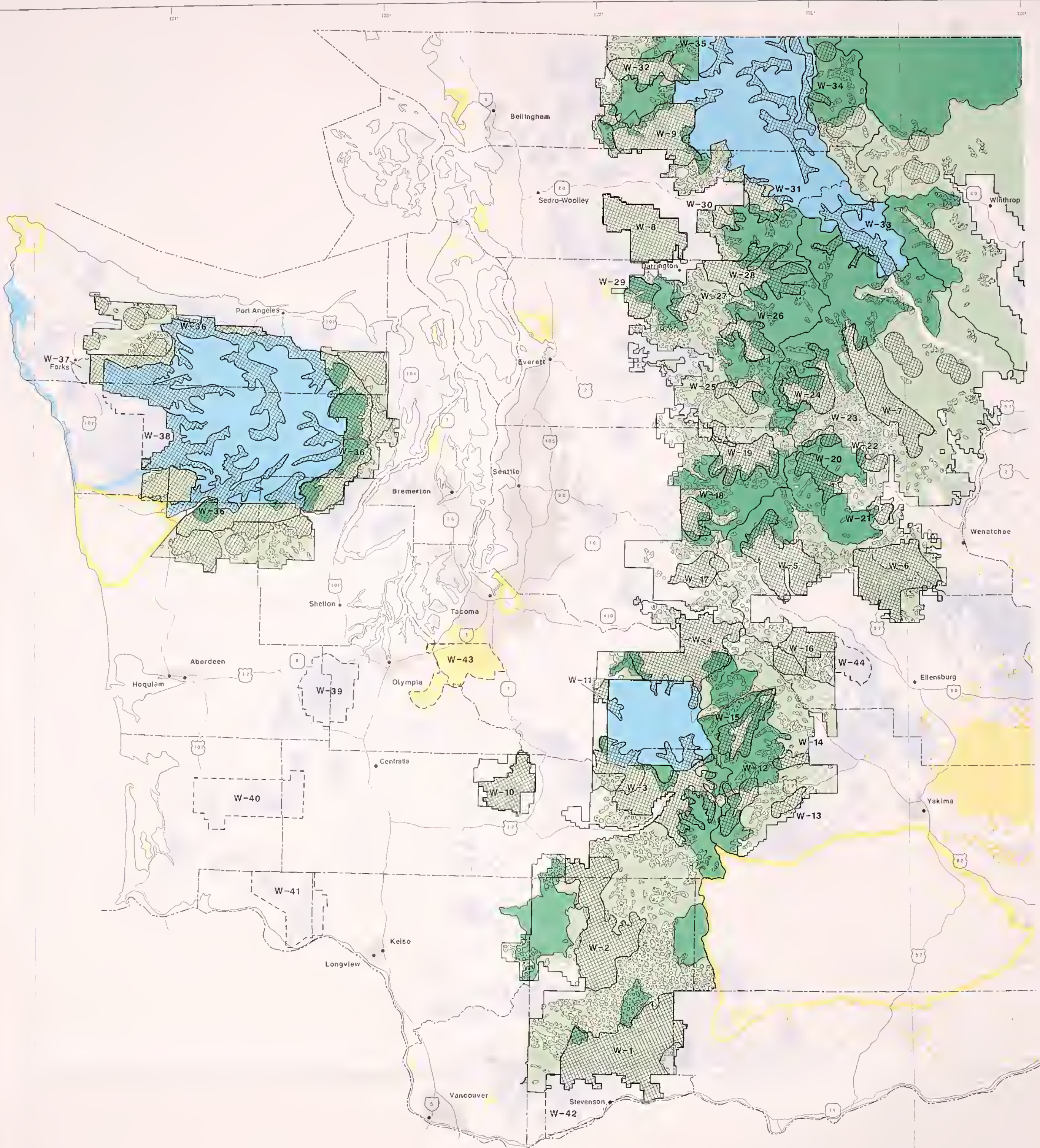
Acres of Spotted Owl Habitat*
 Alternative D
 (Data is for all 17 National Forests included in this analysis)



- Schematic map; not to scale; maps intended for display purposes only.
- Alternative applies only in National Forest.
- Due to their small size, Category 4 Habitat Conservation Areas are not displayed.
- Owl habitat depictions are subject to corrections as new information becomes available.

USDA Forest Service

Map Base: Washington State Department of Natural Resources, 1989
 Scale 1:750,000



U.S. DEPT. OF AGRICULTURE
 NATIONAL AGRICULTURAL LIBRARY
 FEB - 3 1995
 CATALOGING PREP

Alternative E

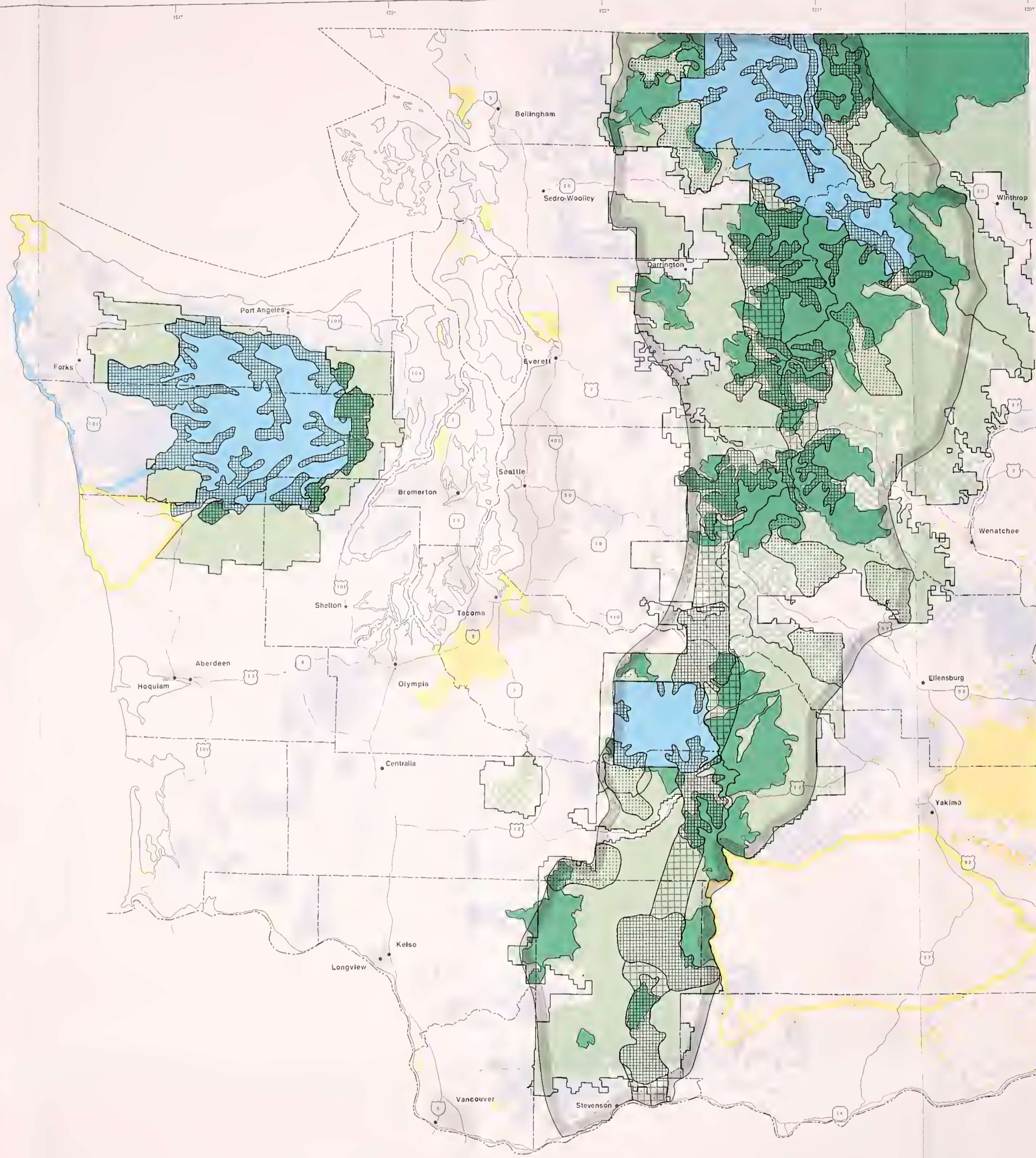
Multi-Resource Strategy

**Northern Spotted Owl
 Final Environmental
 Impact Statement**

State of Washington

Approximate Scale 1:700,000
 1992

This Alternative would apply "A Multi-Resource Strategy for Conservation of the Northern Spotted Owl" to National Forests within the range of the northern spotted owl. This strategy was developed by the National Forest Products Association and American Forest Council.



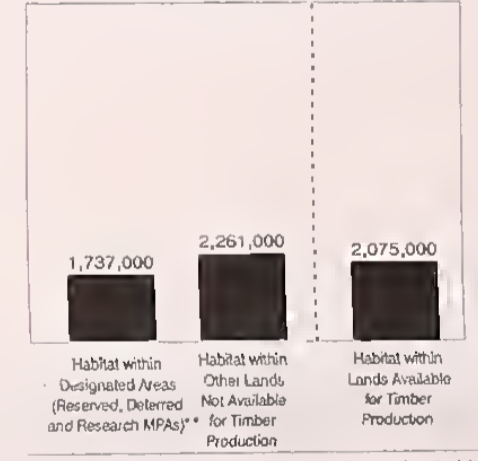
LEGEND

- National Forest (not reserved)
- Wilderness, National Monument, National Recreation Area
- Bureau of Land Management
- National Park Service
- Other Federal Lands
- State Lands
- Indian Reservations
- Forest Boundary
- Reserved Lands Boundary
- County Boundary
- State Boundary
- Roads

- Northern Spotted Owl Management Zone
- Connecting Habitat or Managed as Connecting Habitat
- Designated Areas Managed Primarily For Spotted Owl Habitat**
- Reserved and Deferred Multiple Pair Areas
- Research Multiple Pair Areas

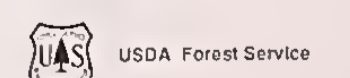
NOTES:

**Acres of Spotted Owl Habitat*
 Alternative E**
 (Data is for all 17 National Forests included in this analysis)



* Includes only nesting, roosting, and toading habitat
 ** Includes 528,000 acres of Research MPAs from which limited harvest is permitted

- Schematic map; not to scale; maps intended for display purposes only.
- Alternative applies only in National Forest.
- Non-National Forest designated areas are not finalized. NFPA/AFC intend to further refine mapped areas outside of the National Forest System as more complete information becomes available.



Map Base: Washington State Department of Natural Resources, 1988, Original Scale 1:750,000

